

On the Odd Cycle Game and Connected Rules

Jan Corsten Adva Mond Alexey Pokrovskiy
Christoph Spiegel Tibor Szabó

22nd February 2021

We study the positional game where two players, Maker and Breaker, alternately select respectively 1 and b previously unclaimed edges of K_n . Maker wins if she succeeds in claiming all edges of some odd cycle in K_n and Breaker wins otherwise. Improving on a result of Bednarska and Pikhurko, we show that Maker wins the odd cycle game if $b \leq ((4 - \sqrt{6})/5 + o(1))n$. We furthermore introduce “connected rules” and study the odd cycle game under them, both in the Maker-Breaker as well as in the Client-Waiter variant.

1 Introduction

Positional games are two-player combinatorial games of perfect information that are played on a finite set X , called the *board*, equipped with a family of subsets $\mathcal{F} \subset 2^X$, called the *winning sets*. Throughout this paper, the board will always be given by $E(K_n)$, the edges of the complete graph on n vertices. In our results we will deal with winning sets that are formed by the odd cycles in that complete graph.

Our main focus will be on *biased Maker-Breaker games*, which were introduced by Chvátal and Erdős [9] and are perhaps the most commonly studied variant of positional games. Here the two players, referred to as Maker and Breaker, take turns selecting respectively 1 and b previously unclaimed elements of the board X until all elements are claimed, with Maker starting the game. Maker wins if she succeeds in claiming all elements of some winning set $F \in \mathcal{F}$ and Breaker wins otherwise.

The value b is referred to as the *bias* of the game. Most common Maker-Breaker games are an easy win for Maker whenever $b = 1$ and the board is big enough, motivating the need to study the biased version of these games where Breaker is given additional power. It is a folklore fact that Maker-Breaker games are bias monotone, i.e., if Breaker has a winning strategy for some $b \in \mathbb{N}$, then he also has one for any $b' \geq b$. It follows that there exists a *threshold bias* $b_{mb}(\mathcal{F})$ so that Breaker wins the game if and only if $b \geq b_{mb}(\mathcal{F})$. Determining that threshold bias for various natural games is one of the central problems in the study of Maker-Breaker games.

For the cycle game Bednarska and Pikhurko [5] proved that $b_{mb}(\mathcal{C}_n) = \lceil n/2 \rceil - 1$, where $\mathcal{C}_n = \{E(C) : C \text{ cycle in } K_n\}$. The \geq direction of this result is trivial: *no matter*

how Maker plays against a bias $b_{mb}(\mathcal{C}_n) - 1$, she will occupy some cycle since she will own at least n edges at the end. This argument however does not give any information about the length of the cycle Maker is guaranteed to occupy. Bednarska and Pikhurko [6] studied the parity of the length. The restriction that Maker should occupy an *odd* cycle is particularly natural, as it is equivalent with his graph being non-bipartite. The general problem of the non- k -colorability game was studied by Hefetz, Krivelevich, Stojaković and Szabó [15], who proved that for every constant k the threshold bias is linear: $s_1(k)n \leq b_{mb}(\mathcal{NC}_n^k) \leq s_2(k)n$, where $\mathcal{NC}_n^k = \{E(C) : C \text{ subgraph of } K_n \text{ that is not } k\text{-colourable}\}$. For the $k = 2$ case, i.e. for the odd cycle game, Bednarska and Pikhurko [6] showed that $b_{mb}(\mathcal{OC}_n) \geq (1 - 1/\sqrt{2} - o(1))n \approx 0.2928n$ where $\mathcal{OC}_n = \{E(C) : C \text{ odd cycle in } K_n\}$.

Since building a cycle of odd length is certainly at least as difficult for Maker as building a cycle of arbitrary length, we have the upper bound

$$b_{mb}(\mathcal{OC}_n) \leq b_{mb}(\mathcal{C}_n) = \lceil n/2 \rceil - 1. \quad (1.1)$$

However, no upper bound separating the two values is known, motivating Bednarska and Pikhurko to ask the following question.

Question 1 (Bednarska and Pikhurko [6]). Do we have $b_{mb}(\mathcal{OC}_n) = (1/2 - o(1))n$?

Here we give the following small improvement on the lower bound of [6].

Theorem 1.1. *The threshold bias for the Maker-Breaker odd cycle game satisfies*

$$b_{mb}(\mathcal{OC}_n) \geq \left(\frac{4 - \sqrt{6}}{5} - o(1) \right) n \approx 0.3101n. \quad (1.2)$$

It is mind-boggling, but we cannot at the moment decide whether any of the (many!) cycles Maker will surely build against bias $0.49n$, is odd. To get closer to an answer to Question 1, one studies what *can* and what *cannot* Maker be guaranteed to achieve against a bias $(1/2 - o(1))n$. Bednarska and Pikhurko [6], for example, showed that Maker can build an even cycle, and Krivelevich [21] proved that Maker can always build a linearly-long cycle (of unknown parity), when $b \leq (1/2 - o(1))n$.

We pursue this theme further, in a different direction. We observe, that in both Maker's strategy presented in [6] as well as the one to prove Theorem 1.1, Maker is maintaining a single connected component throughout the game. We therefore believe it is very natural to study the limits of such Maker strategies. To this end we define a version of the game in which Maker is in fact forced to keep her claimed edges connected, allowing Breaker to use this information to his advantage. We refer to these games as *connected Maker-Breaker games* and denote their threshold bias by $b_{mb}^c(\mathcal{F})$. They follow exactly the same rules as previously laid out, with the exception that Maker is now only allowed to select edges that are incident to her previously claimed edges. If Maker is not able to make such a selection, she loses the game.

Connected Maker-Breaker games are a less-restricted version of Walker-Breaker games, a variant of Maker-Breaker games on graphs, which were introduced by Espig, Frieze, Krivelevich and Pegden [13]. Walker-Breaker games are similar to Maker-Breaker games

with the constraint that Walker has to choose her edges in each turn according to a walk. In particular, Walker’s graph is always connected.

Since playing connected is a restriction for Maker, we clearly have $b_{mb}^c(\mathcal{OC}_n) \leq b_{mb}(\mathcal{OC}_n) \leq \lceil n/2 \rceil - 1$ for any $n \in \mathbb{N}$. We prove an upper bound that separates the bias threshold of the connected game from $n/2$, showing that the answer to Question 1 is “No” if playing connected can be shown to be optimal for Maker.

Theorem 1.2. *The threshold bias for the connected Maker-Breaker odd cycle game satisfies*

$$b_{mb}^c(\mathcal{OC}_n) \leq 0.47n. \quad (1.3)$$

for n large enough.

We also study the Client-Waiter¹ version of the odd cycle game. In every round of a *biased Client-Waiter game*, Waiter offers Client $1 \leq t \leq b + 1$ previously unclaimed elements of the board. Client chooses exactly one of these elements and the remaining $t - 1$ are claimed by Waiter. Client wins if she has claimed all elements of some winning set and Waiter wins otherwise. Here Waiter starts the game.

We note that the reason for allowing Waiter to offer less than $b + 1$ elements per round is to ensure that we are again guaranteed to have a threshold bias $b_{cw}(\mathcal{F})$, so that Waiter wins the game if and only if $b \geq b_{cw}(\mathcal{F})$. This version is commonly referred to as the *monotone* version. In the *strict* version, where Waiter has to offer *exactly* $b + 1$ elements per round, one only has an upper and lower threshold bias. This was not an issue in the Maker-Breaker variant where bonus moves never harm players. For more information on bias monotonicity, we refer the reader to [17].

Hefetz, Krivelevich and Tan [19] studied the Client-Waiter cycle game and proved that $b_{cw}(\mathcal{C}_n) = \lceil n/2 \rceil - 1$. Moreover, Krivelevich [21] proved that Client can always build a linearly long cycle if $b \leq (1/2 - o(1))n$. For the odd cycle game, we trivially have $b_{cw}(\mathcal{OC}_n) \leq b_{cw}(\mathcal{C}_n) = \lceil n/2 \rceil - 1$. Using a random strategy for Client, Hefetz, Krivelevich and Tan [19] proved that $b_{cw}(\mathcal{OC}_n) \geq (1/(4 \log 2) - o(1))n \approx 0.3606n$ and conjectured that the upper bound is asymptotically tight.

Conjecture 1.1 (Hefetz, Krivelevich and Tan [19]). *We have $b_{cw}(\mathcal{OC}_n) = (1/2 - o(1))n$.*

As with Question 1, we will study a connected version of Client-Waiter games in order to get closer to an answer to Conjecture 1.1. In the *connected Client-Waiter game*, Waiter is only allowed to offer edges which are adjacent to some edge already claimed by Client. If there are no such edges left, Client wins the game. During the first round Waiter has to offer edges that are all incident to a single arbitrary vertex.² We denote the threshold

¹This variant of positional games was originally introduced by Beck under the name Chooser-Picker games [2, 3]. However, as this terminology frequently caused confusion, we will use the names Client and Waiter as suggested in [8].

²A more formal definition of these rules would consist of defining an active set of vertices at any point in the game and forcing Waiter to offer edges incident to one of these vertices. If we want Client’s graph to be connected, this set of active vertices must initially consist of a single vertex, and a new vertex becomes active if and only if an edge incident to it has been claimed. Since we are playing on the complete graph, the initial vertex may be chosen arbitrarily. When playing on a non-complete graph, e.g. a random graph, Client would be allowed to choose this vertex at the beginning of the game.

bias of these games by $b_{cw}^c(\mathcal{F})$, so that Waiter wins the game if and only if $b \geq b_{cw}^c(\mathcal{F})$.

Until now Client's role was most comparable to that of Maker, since both of these players are trying to claim all elements of a winning set. However, whereas the introduction of connected rules constituted a disadvantage for Maker, they are now a restriction for Waiter, so that we have $b_{cw}^c(\mathcal{F}) \geq b_{cw}(\mathcal{F})$. Furthermore, Waiter's strategy presented in [19] already follows these rules and therefore $b_{cw}^c(\mathcal{C}_n) = b_{cw}(\mathcal{C}_n) = \lceil n/2 \rceil - 1$. Regarding the odd cycle game, we trivially have $b_{cw}^c(\mathcal{OC}_n) \leq b_{cw}^c(\mathcal{C}_n) = \lceil n/2 \rceil - 1$ and $b_{cw}^c(\mathcal{OC}_n) \geq b_{cw}(\mathcal{OC}_n) \geq (1/(4 \log 2) - o(1))n$. We show that the upper bound is tight, that is we prove Conjecture 1.1 under connected rules.

Theorem 1.3. *The threshold bias for the connected Client-Waiter odd cycle game satisfies*

$$b_{cw}^c(\mathcal{OC}_n) = \lceil n/2 \rceil - 1 \tag{1.4}$$

for every $n \in \mathbb{N}$.

We will use the following notation throughout the rest of the paper. Given a natural number n we write $[n] = \{1, \dots, n\}$. For a graph G , let $V = V(G)$ and $E = E(G)$ respectively denote its set of vertices and edges. We write $v(G) = |V(G)|$ and $e(G) = |E(G)|$ for their cardinalities. For a vertex $v \in V(G)$ and a set of vertices $A \subset V(G)$ let $\deg(v, A)$ denote the number of neighbours of v in A . Moreover, for $A, B \subset V(G)$ we use $e(A, B)$ to denote the number of edges connecting a vertex of A with a vertex of B . We also use $e(A)$ to denote the number of edges between vertices of A . At any point during the game, we will refer to the graph given by the edges claimed by one of the players as *Maker's graph*, *Breaker's graph* and so forth. These do not include isolated vertices that are not part of any edge claimed by that player.

Outline. We start by proving Theorem 1.1 by providing a strategy for Maker in the Maker-Breaker odd cycle game in Section 2. We then prove Theorem 1.2 by providing a strategy for Breaker under connected rules in Section 3. Lastly, we establish the exact bias threshold for the connected Client-Waiter odd cycle game by proving Theorem 1.3 in Section 4. Concluding remarks and open problems can be found in Section 5.

2 A strategy for Maker – Proof of Theorem 1.1

In this section we prove Theorem 1.1 by presenting a strategy for Maker in the Maker-Breaker odd cycle game. The basic idea will be for her to build a tree in which one side of its bipartition is as large as possible. Maker achieves this by initially building a large star around some vertex until Breaker stops her from doing it further. She then connects an arbitrary new vertex to her tree and continues by building a star around that vertex, always using only vertices which are not already part of her tree and therefore never closing an even cycle. She follows this principle until she is either able to close an odd cycle or she is forced to forfeit the game.

Strategy 2.1. Throughout this strategy, let V be the set of vertices in Maker's graph and $R = [n] \setminus V$. The strategy works in phases, starting with phase 0. Let $w_0 \in [n]$ be an arbitrary but fixed vertex. In every round of phase $k \geq 0$, Maker does the following.

- (i) If there is an unclaimed edge closing an odd cycle, she claims it.
- (ii) Otherwise, if there is an unclaimed edge between w_k and R , she claims it.
- (iii) Otherwise, if there is a vertex $u \in R$ which is adjacent to $V \setminus \{w_0, \dots, w_k\}$ via an unclaimed edge and the degree of that vertex in Breaker's graph is at most $|R| - b - 2$, she claims this edge. The new vertex is denoted by w_{k+1} and she proceeds to the next phase.
- (iv) Otherwise, she forfeits.

Before proving that this is a winning strategy, given a sufficiently small bias b , we first define a class of graphs $\mathbb{G}_{n,b}$ that fulfill certain properties. In the proof of Theorem 1.1 we will show that if Breaker wins the game then his final graph must belong to $\mathbb{G}_{n,b}$. This will turn the question of what values of the bias Strategy 2.1 is successful against into the problem of minimising a certain parameter over all graphs in $\mathbb{G}_{n,b}$.

Definition 2.1. We define $\mathbb{G}_{n,b}$ to be the set of tuples $(G, v_0, A_0, \dots, v_s, A_s)$ satisfying the following properties.

- (a) $v_0, \dots, v_s \in [n]$ are distinct.
- (b) $A_0, \dots, A_s \subset [n] \setminus \{v_0, \dots, v_s\}$ are pairwise disjoint non-empty sets.
- (c) G is a graph with $V(G) \subseteq [n]$ that contains all edges which are
 - inside $\{v_0, \dots, v_s\}$ and inside $A_0 \cup \dots \cup A_s$,
 - between $\{v_0, \dots, v_s\}$ and $R = [n] \setminus (\{v_0, \dots, v_s\} \cup A_0 \cup \dots \cup A_s)$ and
 - between v_i and A_j for all $0 \leq i < j \leq s$.
- (d) Every $v \in R$ is either fully connected to $[n] \setminus R$ in G or we have $\deg(v, R) \geq |R| - b - 1$.

Note that G is allowed to contain more than the required edges. When the elements of the tuple are clear from context, we will sometimes write G as an abbreviation for $(G, v_0, A_0, \dots, v_s, A_s)$.

Proof of Theorem 1.1. Assume that Breaker wins the game even though Maker plays according to Strategy 2.1. Let B_k denote the set of neighbours of w_k claimed in phase k by Maker. Note that all edges connecting w_k and B_k are claimed in part (ii) of phase k of the strategy. Let $t \geq 0$ be the phase of Maker's strategy in which she either has to forfeit or the game ends with all edges claimed by the players. Denote Maker's and Breaker's final graphs respectively by G_M and G_B and note that, as previously stated, these do not include isolated vertices that are not part of any edge claimed by that player.

Claim 2.2. G_M is a tree with bipartition parts $\{w_0, \dots, w_t\}$ and $B_0 \cup \dots \cup B_t$.

Proof. Since Breaker wins the game, Maker is never able to close an odd cycle. Since she plays according to Strategy 2.1, she also never closes an even cycle. It follows that G_M is a tree and by design $\{w_0, \dots, w_t\}$ and $B_0 \cup \dots \cup B_t$ are the parts of its bipartition. ■

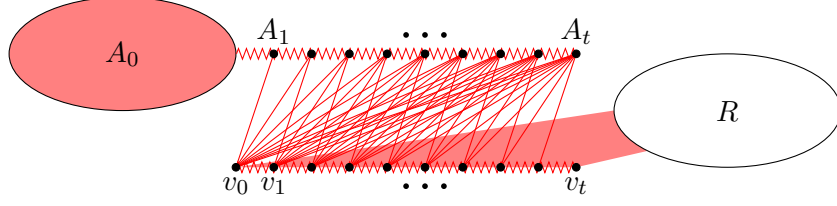


Figure 1: A graph $G \in \mathbb{G}_{n,b}$ that satisfies Claim 2.4 with all required edges in red.

Claim 2.3. *We have $(G_B, w_0, B_0, \dots, w_t, B_t) \in \mathbb{G}_{n,b}$.*

Proof. Let us check that the requirements of Definition 2.1 apply to G_B . (a) and (b) follow immediately from Strategy 2.1. Note that the B_i are non-empty since for every $1 \leq k \leq t$ the vertex w_k , when being chosen at the end of phase $k - 1$, is adjacent to at least $b + 1$ unclaimed edges going to R , so Maker can follow part (ii) in phase k of her strategy even after Breaker has claimed his b edges.

Continuing onto (c), we note that Breaker must have claimed all edges inside $\{w_0, \dots, w_t\}$ and inside $B_0 \cup \dots \cup B_s$, since otherwise Maker would have closed an odd cycle and won the game. Furthermore, for each $0 \leq k \leq t$, Breaker must have claimed all edges between w_k and $R \cup B_{k+1} \cup \dots \cup B_t$ because otherwise Maker would have kept playing in phase k for at least one more round.

Finally, in order to verify (d), we will show that Maker always forfeits the game, that is the game never ends naturally. If Maker has not already forfeited during a previous part of the game, she is clearly forced to do so when $|R| \leq b + 1$ since no vertex can have negative degree. With this observation, the desired property follows immediately from Maker's strategy. \blacksquare

Define the parameter

$$f : \mathbb{G}_{n,b} \rightarrow \mathbb{R}, \quad (G, v_0, A_0, \dots, v_s, A_s) \mapsto \frac{e(G)}{|A_0| + \dots + |A_s| + s} \quad (2.1)$$

and let

$$m = \min \{f(G) : (G, v_0, A_0, \dots, v_s, A_s) \in \mathbb{G}_{n,b}\}. \quad (2.2)$$

Note that the minimum is attained since $\mathbb{G}_{n,b}$ is a finite set.

By Claim 2.2, G_M is a tree and therefore has $N = |B_0| + \dots + |B_t| + t$ edges. It follows that Breaker claimed at most Nb edges during the game and hence

$$b \geq f(G_B, w_0, B_0, \dots, w_t, B_t) \geq m. \quad (2.3)$$

We have therefore turned the problem into a minimisation over $\mathbb{G}_{n,b}$. Fix some $(G, v_0, A_0, \dots, v_s, A_s) \in \mathbb{G}_{n,b}$ which minimises f . In order to simplify this minimisation problem, we will make some observations about the structure of G .

Claim 2.4. *We have $|A_1| = |A_2| = \dots = |A_s| = 1$.*

Proof. Assume otherwise that $|A_j| > 1$ for some $1 \leq j \leq s$. By moving one vertex $u \in A_j$ to A_0 and deleting the edges connecting u and $\{v_0, \dots, v_{j-1}\}$, we would obtain a new graph \tilde{G} and new sets $\tilde{A}_0, \dots, \tilde{A}_s$ satisfying $(\tilde{G}, v_0, \tilde{A}_0, \dots, v_s, \tilde{A}_s) \in \mathbb{G}_{n,b}$ and $f(\tilde{G}) < f(G)$, contradicting our choice of G . \blacksquare

Using Claim 2.4, we can lower bound the number of edges in G by

$$\begin{aligned} e(G) &\geq \binom{|A_0| + s}{2} + \binom{s+1}{2} + (s+1)|R| + \sum_{i=1}^s i + e\left(R, \bigcup_{i=0}^s A_i\right) + e(R) \\ &= \left(|A_0|^2 + 3s^2 + 2|A_0|s + 2|R|s\right)/2 + e\left(R, \bigcup_{i=0}^s A_i\right) + e(R) + o(n^2). \end{aligned} \quad (2.4)$$

Note that this holds even if $s = 0$.

Let R_1 denote the vertices in R that are fully connected to $[n] \setminus R$ and let $R_2 = R \setminus R_1$ denote those that are not. Note that every vertex in R_2 satisfies the degree condition in R , that is $\deg(v, R) \geq |R| - b - 1$ for $v \in R_2$.

Claim 2.5. *We have*

$$e(R, A_0 \cup \dots \cup A_s) = e(R_1, A_0 \cup \dots \cup A_s) = |R_1|(|A_0| + s)$$

and

$$e(R) = e(R_2) = \max(0, \lceil |R_2|(|R| - b - 1)/2 \rceil).$$

Consequently, we may assume that

$$R = \begin{cases} R_1 & \text{if } |R| > 2|A_0| + 2s + b, \\ R_2 & \text{otherwise.} \end{cases}$$

Proof. The first equation follows immediately from the definition of R_1 and the minimality of G . Note that the Erdős–Gallai theorem implies that for every $m > d$ there exists an m -vertex graph satisfying $\deg(v) = d$ for all but at most one vertex v and $\deg(v) \in \{d, d+1\}$ for that remaining vertex. The second equation now follows from the definition of R_2 and the minimality of G as well. It is now easy to see from these equations that $f(G)$ is minimised when $R = R_2$ if $|R| \leq 2|A_0| + 2s + b$ and when $R = R_1$ otherwise. \blacksquare

Furthermore, we have the following relation between R_2 and A_0 .

Claim 2.6. *If $s \geq 1$ then $|R_2| + s \leq |A_0| \leq |R_2| + s + 3$.*

Proof. To see that the left-hand side of the inequality holds, assume to the contrary that $|A_0| < |R_2| + s$. Moving v_s and the vertex $u \in A_s$ (of which there is only one by Claim 2.4) to A_0 , removing the $2s$ edges between $\{u, v_s\}$ and $\{v_0, \dots, v_{s-1}\}$ as well as the $|R_2|$ edges between v_s and R_2 and adding the $|A_0| + s$ edges between v_s and $A_0 \cup \dots \cup A_s$, we obtain a new graph \tilde{G} with new sets $\tilde{A}_0, \dots, \tilde{A}_{s-1}$. Note that $(\tilde{G}, v_0, \tilde{A}_0, \dots, v_{s-1}, \tilde{A}_{s-1}) \in \mathbb{G}_{n,b}$ and that, since we removed $|R_2| + 2s$ edges and added $|A_0| + s$ edges and by assumption $|R_2| + 2s > |A_0| + s$, we have $f(\tilde{G}) < f(G)$, contradicting

our choice of G . If $|A_0| > |R_2| + s + 3$, then we repeat this argument by removing two vertices v, u from A_0 and setting them to be $v_{s+1} = v$ and $A_{s+1} = \{u\}$. It is easy to verify that this leads to a similar contradiction, proving the claim. \blacksquare

Define

$$\beta = b/n, \quad \alpha = |A_0|/n, \quad \rho = |R|/n \quad \text{and} \quad \sigma = s/n \quad (2.5)$$

and note that $|A_0| + 2s + 1 + |R| = n$, that is

$$\alpha + 2\sigma + \rho + o(1) = 1. \quad (2.6)$$

Finally, we will solve the optimisation problem through a case distinction.

Case 1. If $|R| \leq 2|A_0| + 2s + b$, then by Claim 2.5 we must have $R = R_2$ and $e(R, A_0 \cup \dots \cup A_s) = 0$. We note that, if $s \geq 1$, dividing the relation given in Claim 2.6 by n gives us

$$\alpha = \rho + \sigma + o(1). \quad (2.7)$$

Case 1.1. If $|R| \leq b + 1$ then we have $e(R) = 0$ by Claim 2.5. Plugging the parameters into (2.4) therefore gives

$$\beta \geq \frac{f(G)}{n} = \frac{e(G)/n^2}{(|A_0| + 2s)/n} \geq \frac{\alpha^2 + 3\sigma^2 + 2\alpha\sigma + 2\rho\sigma}{2(\alpha + 2\sigma)} + o(1). \quad (2.8)$$

If $s = 0$ (and therefore $\sigma = 0$), we get

$$\beta \geq \frac{\alpha^2}{2\alpha} = \frac{\alpha}{2} = \frac{1 - \rho}{2} \geq \frac{1 - \beta}{2}$$

and thus $\beta \geq 1/3$.

If $s \geq 1$, we can rearrange (2.6) and (2.7) to get $\sigma = (1 - 2\rho)/3 + o(1)$ and $\alpha = (1 + \rho)/3 + o(1)$. By plugging this into (2.8), we get

$$\begin{aligned} \beta &\geq \frac{\alpha^2 + \sigma(\sigma + 2\alpha + 2\rho)}{2(\alpha + 2\sigma)} + o(1) \\ &= \frac{1 + 2\rho + \rho^2 + (1 - 2\rho)(5 + 2\rho)}{18(1 - \rho)} + o(1) \\ &= \frac{2 - 2\rho - \rho^2}{6(1 - \rho)} + o(1). \end{aligned}$$

By assumption we also know that $\beta \geq \rho + o(1)$, so that after minimising the maximum of ρ and $(2 - \rho^2 - 2\rho)/(6(1 - \rho))$ over $0 \leq \rho < 1$, we get that $\beta \geq (4 - \sqrt{6})/5 + o(1)$.

Case 1.2. If $|R| > b + 1$, then $e(R) \geq |R|(|R| - b - 1)/2$ by Claim 2.5. Again plugging the parameters into (2.4) therefore gives

$$\beta \geq \frac{\alpha^2 + 3\sigma^2 + 2\alpha\sigma + 2\rho\sigma + \rho(\rho - \beta)}{2(\alpha + 2\sigma)} + o(1). \quad (2.9)$$

If $s = 0$, we have $\alpha = 1 - \rho + o(1)$ by (2.6) and hence (2.9) becomes

$$\beta \geq \frac{\alpha^2 + \rho(\rho - \beta)}{2\alpha} = \frac{1 + 2\rho^2 - 2\rho - \rho\beta}{2 - 2\rho}.$$

Solving for β we get $\beta \geq (1 - 2\rho + 2\rho^2)/(2 - \rho)$, which implies $\beta \geq 2 - \sqrt{5}/2$.

If $s \geq 1$, combining (2.6), (2.7), and (2.9) implies

$$\beta \geq \frac{2 - 2\rho + 2\rho^2 - 3\beta\rho}{6 - 6\rho} + o(1),$$

which leads to

$$\beta \geq \frac{2 - 2\rho + 2\rho^2}{6 - 3\rho} + o(1).$$

By assumption we also know that $\beta \leq \rho + o(1)$. We can verify that $(2 - 2\rho + 2\rho^2)/(6 - 3\rho) > \rho$ when $(4 - \sqrt{6})/5 < \rho \leq 1$, so that after minimising $(2 - 2\rho - 2\rho^2)/(6 - 3\rho)$ over $0 \leq \rho \leq (4 - \sqrt{6})/5$, we again obtain that $\beta \geq (4 - \sqrt{6})/5 + o(1)$.

Case 2. If $|R| > 2|A_0| + 2s + b$, then by Claim 2.5 we may assume that $R = R_1$. Using that $R = R_1$ in (2.4) gives us

$$\beta \geq \frac{\alpha^2 + 3\sigma^2 + 2\alpha\sigma + 2\rho(1 - \rho)}{2(\alpha + 2\sigma)} + o(1). \quad (2.10)$$

If $s = 0$, we again have $\alpha = 1 - \rho + o(1)$ by (2.6) and hence (2.10) becomes

$$\beta \geq \frac{\alpha^2 + 2\rho(1 - \rho)}{2\alpha} + o(1) = \frac{(1 - \rho)^2 + 2\rho(1 - \rho)}{2(1 - \rho)} = \frac{1 + \rho}{2} \geq 1/2.$$

If $s \geq 1$ then again dividing the relation given in Claim 2.6 by n gives us

$$\alpha = \sigma + o(1). \quad (2.11)$$

Combining (2.6), (2.10) and (2.11) implies that $\beta \geq 1 - 2\alpha + o(1)$. However, the case assumption combined with (2.6) and (2.11) also gives us that $\alpha \leq (1 - \beta)/7 + o(1)$. Combining these two results, we get that $\beta = 1 + o(1)$.

All cases resulted in $\beta \geq (4 - \sqrt{6})/5 + o(1)$ so that $b \geq ((4 - \sqrt{6})/5 + o(1))n$. \square

3 A strategy for Breaker – Proof of Theorem 1.2

In this section we prove Theorem 1.2 by presenting a strategy for Breaker in the connected Maker-Breaker odd cycle game. Note that, as long as Maker has not yet won the game, her graph will always be bipartite. Besides blocking any immediate threats of Maker creating an odd cycle, Breaker's goal will be to connect the vertices not yet touched by Maker in as even a way as possible to the two parts of Maker's graph. This way

Breaker attempts to minimise the number of his edges ending up between the two parts of Maker's graph, where they would not serve the purpose of blocking any odd cycle.

Let $G_M(s) = (V_s, E_s)$ denote Maker's graph after her s -th turn and let $R_s = [n] \setminus V_s$ be the set of vertices not touched by Maker. Since $G_M(s)$ is bipartite and since Maker is forced to play connected, there is a unique (up to labelling) bipartition $V_s = V_s^1 \cup V_s^2$, which we may choose in such a way that $V_s^i \subset V_{s+1}^i$ holds for all $s \geq 0$ and $i \in \{1, 2\}$. Note again that our notion of Maker's and Breaker's graph do not include isolated vertices.

A *state* is a tuple (s, k) with $s \geq 1$ and $0 \leq k \leq b$ and describes the situation of the game after the s -th move of Maker and after Breaker has claimed k edges in his s -th turn. For example, the state $(1, 0)$ describes the situation right after Maker claimed the first edge of the game. We let $\deg_k(v, V_s)$, $\deg_k(v, V_s^1)$ and $\deg_k(v, V_s^2)$ denote the number of neighbours of a vertex $v \in [n]$ in V_s , V_s^1 and V_s^2 in Breaker's graph at state (s, k) . We similarly define other quantities such as $e_k(V_s)$, $e_k(R_s)$, $e_k(R_s, V_s)$, $e_k(R_s, V_s^1)$ and $e_k(R_s, V_s^2)$. When we refer to these quantities at the end of round s , that is when $k = b$, we will omit the extra parameter and simply denote them by $\deg(v, V_s)$ and so forth.

Unless stated otherwise, we are always referring to Breaker's graph whenever talking about edges, degrees, etc. for the remainder of this section. Using this notation, let us state Breaker's strategy.

Strategy 3.1. After the s -th move of Maker, Breaker does the following.

- (i) He selects every unclaimed edge inside V_s^1 or inside V_s^2 , killing all threats of Maker completing an odd cycle with her next move. If this is not possible, he forfeits.
- (ii) Assume Breaker has fulfilled part (i) by claiming $0 \leq k_0 < b$ edges and is in his k -th move for $k_0 < k \leq b$. Also assume that $e_k(V_s^{i_1}, R_s) \leq e_k(V_s^{i_2}, R_s)$ where $\{i_1, i_2\} = \{1, 2\}$.
 - (a) If $|R_s| \leq b$ and there are at least 1 and at most $b - k + 1$ unclaimed edges between V_s^i and R_s for some $i \in \{1, 2\}$, then he claims an arbitrary edge between V_s^i and R_s .
 - (b) Otherwise, if there are unclaimed edges between R_s and $V_s^{i_1}$, he selects an edge that connects $V_s^{i_1}$ to some vertex $v \in R_s$ minimising $\deg_k(v, V_s^{i_1})$. If there are multiple options, he takes one for which $\deg_k(v, V_s^{i_2}) - \deg_k(v, V_s^{i_1})$ is maximised.
 - (c) Otherwise, if there are unclaimed edges between R_s and $V_s^{i_2}$, he selects an edge that connects $V_s^{i_2}$ to some vertex $v \in R_s$ minimising $\deg_k(v, V_s^{i_2})$.
 - (d) Otherwise he claims an arbitrary edge.

Any ties in steps (ii)(a) and (ii)(c) of this strategy are always broken arbitrarily unless otherwise specified.

From now on we assume that Breaker is given a bias of

$$b = \left\lceil \frac{n - \varepsilon n}{2} \right\rceil, \quad (3.1)$$

where $\varepsilon = 0.06$. Let us furthermore assume that, despite Breaker following Strategy 3.1 with the given bias, Maker wins the game in the $(t + 2)$ -nd round for some $t \geq 0$. We begin with some easy facts.

Observation 3.1. *We may assume the following throughout the game.*

- (i) *Maker's graph $G_M(s)$ is a tree for all $1 \leq s \leq t + 1$ and in particular $|V_s| = s + 1$.*
- (ii) *Maker must create at least $b + 1$ threats in round $t + 1$.*
- (iii) *We have $t \leq n - 2$.*

Proof. Let us start by proving (i). Suppose that at some point Maker claims an edge e which closes an even cycle C_1 in her graph. Let C_2 be the odd cycle that she closes in the $t + 2$ -nd round. If $e \in C_2$, then $(C_2 \setminus C_1) \cup (C_1 \setminus C_2)$ is another odd cycle not containing e . It follows that we may assume that she chose any other edge instead of e without decreasing her possibility of winning. If at some point there are only edges left which close an even cycle in Maker's graph, she will lose the game, contradicting our assumption.

For (ii), note that the only way Breaker loses while following Strategy 3.1 is when he cannot defend all threats and is forced to forfeit, implying that he must have faced $b + 1$ threats that were newly created by Breaker in the $(t + 1)$ -st round.

To see that (iii) holds, note that by (i) Maker's graph would be a spanning tree after round $n - 1$, so that in every further round she cannot create any new threats. By (ii) it follows that $t + 1 \leq n - 1$. \square

The next lemma establishes that Breaker, when following Strategy 3.1 but still losing, never claims any edge within R_s or between V_s^1 and V_s^2 during round s .

Observation 3.2. *Breaker never executes parts (ii) (a) or (d) of Strategy 3.1.*

Proof. If at some point in the game Breaker were to execute part (ii) (d) of his strategy, that is he selects an arbitrary unclaimed edge, then this also implies that R_s is fully connected to V_s in Breaker's graph, as he no longer was able to execute parts (ii) (b) and (ii) (c) of his strategy. It follows that Maker could only claim edges between V_s^1 and V_s^2 , contradicting Observation 3.1 (i).

If Breaker executes part (ii) (a) of the strategy once during round s , then he will in fact continue claiming edges between, without loss of generality, V_s^1 and R_s during round s until the two sets are fully connected. Note that he manages to do so before round s is over. By Observation 3.1 (i), it follows that Maker will be forced to select an edge between V_s^2 and R_s in her $(s + 1)$ -st move (since R_s cannot be fully connected to both V_s^1 and V_s^2 by the previous paragraph), creating no new threats. Breaker therefore is able to continue executing part (ii) (a) of the strategy, always keeping R_s and V_s^1 fully connected, until Maker has claimed a spanning tree, contradicting Observation 3.1 (iii). \square

Even though Observation 3.2 states that *during round s* Breaker only ever selects edges between R_s and V_s , an edge that was *previously* claimed by Breaker between $R_{\tilde{s}}$ and $V_{\tilde{s}}$ for some $\tilde{s} < s$ can still end up as an edge between V_s^1 and V_s^2 through Maker's choices.

Estimating how many of Breaker's edges end up between the two parts of Maker's tree will be the central ingredient in the proof of Theorem 1.2. However, let us first establish that Breaker is successful in his attempt to distribute his edges between R_s and V_s^1 as well as V_s^2 in an even manner.

Lemma 3.3. *For any $1 \leq s \leq t + 1$, $0 \leq k \leq b$ and $u, v \in R_s$ we have*

- (a) $|\deg_k(u, V_s) - \deg_k(v, V_s)| \leq 2$ and
- (b) $|\deg_k(u, V_s^i) - \deg_k(v, V_s^i)| \leq 1$ for $i \in \{1, 2\}$.

Proof. It suffices to prove part (b) since part (a) is an immediate consequence of it. We begin by observing that after Maker's $(s + 1)$ -st move R_s gets reduced by one vertex by Observation 3.1, but none of the degrees of the remaining vertices change. Let us therefore consider what happens during Breaker's moves when he follows Strategy 3.1. We trivially note that, whenever there is a free edge between R_s and V_s^i for some $i \in \{1, 2\}$, there is a free edge between any vertex $v \in R_s$ with minimal $\deg_k(v, V_s^i)$ and V_s^i . This basic observation combined with an elementary inductive argument implies part (b) of the claim, since Breaker only ever claims an edge between v and V_s^i if v minimises $\deg_k(v, V_s^i)$ in Strategy 3.1. \square

As promised, we are now able to show that Maker, assuming she wins, forces Breaker to have previously claimed almost all edges between V_s^1 and V_s^2 for any $1 \leq s \leq t$. Let us refer to all edges between V_s^1 and V_s^2 not claimed by Breaker as edges that Breaker *saved*. Note that, by Observation 3.2, all edges which are saved at some point of the game remain saved throughout the game.

Lemma 3.4. *Breaker saved at most $\lfloor (\varepsilon n^2 - n)/2 \rfloor$ edges by the end of round t if $n \geq 34$.*

Proof. By Observation 3.1 (ii), there must exist some vertex $v \in R_t$ such that at least $b + 2$ of the edges between v and V_t are unclaimed, that is $\deg(v, V_t) \leq t - b - 1$. By Lemma 3.3 (a), it follows that $\deg(u, V_t) \leq t - b + 1$ for every $u \in R_t$.

Assume now to the contrary that Breaker saved strictly more than $\lfloor (\varepsilon n^2 - n)/2 \rfloor$ edges inside V_t at the end of round t . Since Maker has claimed exactly t edges inside V_t by Observation 3.1 (i) and Observation 3.2, Breaker has claimed at most

$$bt < \binom{t+1}{2} - t - \varepsilon n^2/2 + n/2 + (n-t-1)(t-b+1)$$

edges at the end of round t . From this we get the contradiction

$$\begin{aligned} b &< \frac{-t^2 + 2t(n-2) + 3n - \varepsilon n^2 - 2}{2(n-1)} \leq \frac{(n-2)^2 + 3n - \varepsilon n^2 - 2}{2(n-1)} \\ &= \frac{(n^2 - \varepsilon n^2) - (n-2)}{2(n-1)} \leq \left\lceil \frac{n - \varepsilon n}{2} \right\rceil \end{aligned}$$

where for the second inequality we have used the fact that the numerator is maximised when $t = n - 2$ and for the last inequality we are using that $\varepsilon = 0.06$ and $n \geq 34$. \square

Combining Observation 3.2 and Lemma 3.4 will allow us to deduce good bounds on the number of edges between V_s and R_s . Let us write

$$d_s = \frac{e(V_s, R_s)}{|R_s|} \quad \text{and} \quad d_s^i = \frac{e(V_s^i, R_s)}{|R_s|} \quad (3.2)$$

for the average number of neighbours of a vertex $v \in R_s$ in V_s and V_s^i for $i \in \{1, 2\}$. We start by bounding d_s^i with respect to d_s .

Lemma 3.5. *For any $1 \leq s \leq t$ and $i \in \{1, 2\}$ we have*

$$\frac{d_s - 1}{2} \leq d_s^i \leq \frac{d_s + 1}{2}. \quad (3.3)$$

Proof. Let us call a state (s, k) *safe* if there exists some $u_0 \in R_s$ such that

$$|\deg(u_0, V_s^1) - \deg(u_0, V_s^2)| \leq 1 \quad \text{and} \quad \deg(u_0, V_s^1) = \deg(u_0, V_s^2)$$

for any $u \in R_s \setminus \{u_0\}$. We note that any safe state satisfies $|e_k(V_s^1, R_s) - e_k(V_s^2, R_s)| \leq 1$. Clearly the initial state $(1, 0)$ is safe and (3.3) holds if the state (s, b) is safe. We also note that a state remains safe if Maker makes a move or if Breaker executes parts (i) or (ii) (b) of Strategy 3.1. We will show that, whenever some state becomes unsafe, Breaker will quickly return to a safe state without (3.3) ever being violated.

Suppose that (s_0, k_0) is not safe for some $s_0 \leq t$ and $1 \leq k_0 \leq b$, but the previous state $(s_0, k_0 - 1)$ is safe. By definition of Strategy 3.1 and by Observation 3.2, all edges between R_{s_0} and one part, say $V_{s_0}^1$, must be claimed by Breaker at state $(s_0, k_0 - 1)$. It follows that, from his k_0 -th move on, Breaker claims exactly $b - k_0 + 1$ edges incident to R_{s_0} and $V_{s_0}^2$ in round s_0 , that is

$$2 \leq e(R_{s_0}, V_{s_0}^2) - e(R_{s_0}, V_{s_0}^1) \leq 1 + (b - k_0 + 1) \leq b + 1. \quad (3.4)$$

By Observation 3.1 (i), Maker must claim an edge incident to R_{s_0} and $V_{s_0}^2$ in her $(s_0 + 1)$ -st turn, therefore not creating any new threats of closing an odd cycle. Since $\deg(u, V_{s_0}^1) \leq \deg(u, V_{s_0}^2)$ for any $u \in R_{s_0}$, it follows that after Maker's move we still have

$$2 \leq e_0(R_{s_0+1}, V_{s_0+1}^2) - e_0(R_{s_0+1}, V_{s_0+1}^1) \leq b + 1.$$

Let the edge claimed by Maker in round $s_0 + 1$ be incident to $v_0 \in R_{s_0}$. We know that all vertices of $V_{s_0+1}^1 = V_{s_0}^1 \cup \{v_0\}$ except for v_0 are fully connected to R_{s_0+1} at the beginning of Breaker's turn in round $s_0 + 1$. This means that all but exactly $|R_{s_0+1}|$ edges between $V_{s_0+1}^1$ and R_{s_0+1} are claimed. Since Breaker never executes part (ii) (a) of Strategy 3.1 by Observation 3.2, we must have

$$|R_{s_0+1}| \geq b + 1. \quad (3.5)$$

In particular, Breaker begins round $s_0 + 1$ by claiming edges incident to $V_{s_0+1}^1$ and R_{s_0+1} until

$$e_{k_1}(R_{s_0+1}, V_{s_0+1}^1) = e_{k_1}(R_{s_0+1}, V_{s_0+1}^2) - 1 \quad (3.6)$$

for some $0 \leq k_1 \leq b$. By the way that ties are broken in part (ii) (b) of Strategy 3.1, it follows that $\deg_{k_1}(u, V_{s_0+1}^1) \leq \deg_{k_1}(u, V_{s_0+1}^2)$ for any $u \in R_{s_0+1}$ and hence (3.6) in fact implies that $(s_0 + 1, k_1)$ is again a safe state.

Finally, since (3.4) and (3.5) imply that $|d_{s_0}^1 - d_{s_0}^2| \leq 1$, this completes the proof. \square

Let us combine all of the previous results to describe the distribution of edges and vertices throughout the game.

Lemma 3.6. *For $1 \leq s \leq 2n/3$, $s \leq t$ and $n \geq 5$ we have*

$$\frac{s}{2} - 2\varepsilon n < d_s < \frac{s}{2} + \frac{\varepsilon n}{2} + 4. \quad (3.7)$$

Proof. Lemma 3.4 implies the lower bound

$$e(V_s) \geq \binom{s+1}{2} - s - \left\lfloor \frac{\varepsilon n^2 - n}{2} \right\rfloor \geq \frac{s^2 - s - \varepsilon n^2 + n}{2}$$

so that by Observation 3.2

$$e(V_s, R_s) = bs - e(V_s) \leq \frac{n - \varepsilon n + 1}{2} s - \frac{s^2 - s - \varepsilon n^2 + n}{2}.$$

Dividing by $|R_s| = n - s - 1$, we get

$$d_s \leq \frac{s + \varepsilon n}{2} + \frac{3s - n + \varepsilon n}{2(n - s - 1)} < \frac{s + \varepsilon n}{2} + 4$$

where the last inequality holds by our assumptions on the size of s and n . On the other hand, we also have

$$e(V_s, R_s) \geq \frac{n - \varepsilon n}{2} s - \frac{s^2 - s}{2} > \frac{(s - 4\varepsilon n)(n - s - 1)}{2}$$

where the last inequality holds by our assumptions on the size of s . Dividing by $|R_s| = n - s - 1$ gives us $d_s > (s - 4\varepsilon n)/2$. \square

Corollary 3.7. *For $1 \leq s \leq 2n/3$, $s \leq t$ and $n \geq 5$ we have*

$$\frac{s}{4} - \varepsilon n - \frac{1}{2} < d_s^i < \frac{s}{4} + \frac{\varepsilon n}{4} + \frac{5}{2} \quad \text{for } i \in \{1, 2\}. \quad (3.8)$$

Lastly, we will need two more technical lemmas before we can prove Theorem 1.2.

Lemma 3.8. *For every $1 \leq s \leq (2/3 - \sqrt{\varepsilon})n$ there exists $i \in \{1, 2\}$ such that*

$$|V_s^i| < d_s^i + 3\sqrt{\varepsilon}n/2 \quad (3.9)$$

for $n \geq 184$.

Proof. Suppose to the contrary that $|V_{s_0}^i| \geq d_{s_0}^i + 3\sqrt{\varepsilon}n/2$ for both $i \in \{1, 2\}$ and some fixed $1 \leq s_0 \leq (2/3 - \sqrt{\varepsilon})n$. Using Lemma 3.3 (a) we get

$$\begin{aligned} d_{s+1} &= \frac{e(V_{s+1}, R_{s+1})}{|R_{s+1}|} \leq \frac{e(V_s, R_s) + b - (d_s - 2)}{|R_{s+1}|} \\ &= \frac{e(V_s, R_s) - d_s}{|R_s| - 1} + \frac{b + 2}{|R_s| - 1} \\ &= d_s + \frac{\lceil (n - \varepsilon n)/2 \rceil + 2}{n - s - 2} \\ &\leq d_s + 3/2 \end{aligned}$$

for every $1 \leq s \leq 2n/3$, where the last inequality holds since $\varepsilon = 0.06$ and $n \geq 184$. By iterating this and using Lemma 3.3 (b) and Lemma 3.5, we get

$$\begin{aligned} \deg(u, V_{s_0+j}^i) &\leq d_{s_0+j}^i + 1 \leq \frac{d_{s_0+j}}{2} + \frac{3}{2} \\ &\leq \frac{d_{s_0} + 3j/2}{2} + \frac{3}{2} \leq d_{s_0}^i + 3j/4 + 2 \end{aligned}$$

for every $u \in R_{s_0+j} \subset R_{s_0}$, $j = 0, \dots, \lfloor \sqrt{\varepsilon}n \rfloor$ and $i \in \{1, 2\}$. By our assumption on the cardinality of $V_{s_0}^i$, Breaker therefore saves at least

$$\begin{aligned} |V_{s_0+j}^i| - \max_{u \in R_{s_0+j}} \deg(u, V_{s_0+j}^i) &\geq |V_{s_0}^i| - (d_{s_0}^i + 3j/4 + 2) \\ &\geq 3\sqrt{\varepsilon}n/2s - 3j/4 - 2 \end{aligned}$$

edges in of the rounds $s_0 + 1, \dots, s_0 + \lfloor \sqrt{\varepsilon}n \rfloor$. In total Breaker therefore saves at least

$$\begin{aligned} \sum_{j=0}^{\lfloor \sqrt{\varepsilon}n \rfloor} (3\sqrt{\varepsilon}n/2 - 3j/4 - 2) &= \lfloor \sqrt{\varepsilon}n \rfloor (3\sqrt{\varepsilon}n/2 - 2) - 3/4 \binom{\lfloor \sqrt{\varepsilon}n \rfloor + 1}{2} \\ &\geq 9\varepsilon n^2/8 - 3\sqrt{\varepsilon}n > \frac{\varepsilon n^2 - n}{2} \end{aligned}$$

edges throughout the game, contradicting Lemma 3.4. \square

Lemma 3.9. *Maker does not win early, that is $t \geq 2n/3$ if $n \geq 5$.*

Proof. Without loss of generality, we assume that Maker claimed an edge between V_t^1 and some vertex $v \in R_t$ in the $(t + 1)$ -st round. By Observation 3.1 (ii), this created at least $b + 1$ threats and therefore $|V_t^2| - \deg(v, V_t^2) \geq b + 1$. By Observation 3.1 (i) and Lemma 3.3 (b), we therefore have

$$t + 1 - d_t \geq t + 1 - |V_t^1| - d_t^2 = |V_t^2| - d_t^2 \geq b.$$

If we assume that $t < 2n/3$, then by Lemma 3.6 we have

$$\frac{t + 2 + 4\varepsilon n}{2} > t + 1 - d_t \geq b \geq \frac{(1 - \varepsilon)n}{2},$$

a contradiction. \square

We are finally able to complete the proof of Theorem 1.2.

Proof of Theorem 1.2. Assume that $n \geq 184$ and consider the two rounds

$$s_1 = \left\lfloor \frac{(2/3 - \sqrt{\varepsilon})n}{2} \right\rfloor \quad \text{and} \quad s_2 = 2s_1.$$

Note that $s_1, s_2 < t$ by Lemma 3.9. By Lemma 3.8 and Corollary 3.7 we now have, without loss of generality, that

$$|V_{s_1}^1| < d_{s_1}^1 + 3\sqrt{\varepsilon}n/2 < s_1/4 + (\varepsilon/4 + 3\sqrt{\varepsilon}/2)n + 5/2. \quad (3.10)$$

By Observation 3.1 (i), it follows that

$$|V_{s_1}^2| = s_1 + 1 - |V_{s_1}^1| > 3s_1/4 - (\varepsilon/4 + 3\sqrt{\varepsilon}/2)n - 5/2. \quad (3.11)$$

Again by Corollary 3.7, we also have

$$|V_{s_2}^1| \geq d_{s_2}^1 > s_2/4 - \varepsilon n - 1/2. \quad (3.12)$$

Clearly (3.10) and (3.12) imply that Maker adds a vertex to V_s^1 during at least

$$(s_2 - s_1)/4 - (3\sqrt{\varepsilon}/2 + 5\varepsilon/4)n - 2 \quad (3.13)$$

of the rounds between rounds $s_1 + 1$ and s_2 . By (3.11), Lemma 3.3 (b) and Corollary 3.7 we know that Breaker saves at least

$$|V_{s_1}^2| - d_{s_1}^2 - 1 > s_1/2 - (\varepsilon + 3\sqrt{\varepsilon})n/2 - 6$$

edges in each of these rounds. Inserting s_1 and s_2 , Breaker therefore saves at least

$$\left(\frac{2/3 - \sqrt{\varepsilon}}{8} - \frac{3\sqrt{\varepsilon}}{2} - \frac{5\varepsilon}{4} \right) \left(\frac{2/3 - \sqrt{\varepsilon}}{4} - \frac{\varepsilon}{2} - \frac{3\sqrt{\varepsilon}}{2} \right) n^2 - o(n^2) > \varepsilon n^2 - o(n^2)$$

edges in total, contradicting Lemma 3.4 if n is large enough. \square

4 A strategy for Client – Proof of Theorem 1.3

In this section we prove Theorem 1.3 by presenting a strategy for Client in the connected Client-Water odd cycle game. We note that Client's graph, as long as she has not yet won the game, will be bipartite. If at any point there is an unclaimed edge inside either of the two parts of that bipartition, Waiter will be forced to eventually offer it, allowing Client to close an odd cycle and therefore winning the game. It follows that Waiter, whenever he offers an edge incident to a vertex which is not yet part of Client's graph, will either offer all unclaimed edges between that vertex and Client's graph or he must have previously claimed all edges between that vertex and one part of the bipartition.

Client's strategy will be aimed at reducing the number of times the latter of the two scenarios occurs.

Let $G_C(s) = (V_s, E_s)$ denote Client's graph after her s -th turn and let $R_s = [n] \setminus V_s$ be the set of vertices not touched by Client. As already mentioned, $G_C(s)$ is bipartite as long as Client has not won the game and since $G_C(s)$ is connected, there is a unique (up to labelling) bipartition $V_s = V_s^1 \cup V_s^2$, which we may choose in such a way that $V_s^i \subset V_{s+1}^i$ holds for all $s \geq 0$ and $i \in \{1, 2\}$. Note again that our notion of Client's and Waiter's graph do not include isolated vertices.

Unless stated otherwise, we are always referring to Waiter's graph when talking about edges, degrees, etc. for the remainder of this section. Using this notation, let us introduce the following definition.

Definition 4.1. Let $i \in \{1, 2\}$. A vertex $v \in R_s$ is *critical* with respect to V_s^i , if every edge between it and V_s^i has already been claimed by Waiter by the end of round s . A part V_s^i is *critical* if there exists a vertex $v \in R_s$ which is critical with respect to V_s^i .

The following strategy for Client tries to avoid having many critical vertices. Parts (i) and (ii) of it merely imply that Client should win the game whenever she gets a chance to do so and therefore should be part of every rational strategy for Client. Part (v) implies that Client chooses to forfeit rather than claiming an edge that would close an even cycle in her graph. In particular, as long as Client has not won the game, her graph will be a tree.

Strategy 4.1. Let W_s be the set of edges offered by Waiter in round $s \geq 1$.

- (i) If there is some edge in W_s closing an odd cycle in Client's graph, she claims it.
- (ii) Otherwise, if there is some edge in W_s so that after claiming it there would be an unclaimed edge in V_s^1 or V_s^2 , she claims it.
- (iii) Otherwise, if there is some edge in W_s which is incident to a non-critical part and to R_s , she claims it.
- (iv) Otherwise, if there is some edge in W_s which is incident to R_s , she claims it.
- (v) Otherwise she forfeits.

Considering this strategy for Client, we now prove Theorem 1.3.

Proof of Theorem 1.3. From now on we assume that Waiter is given a bias of

$$b = \left\lceil \frac{n}{2} \right\rceil - 2 \tag{4.1}$$

and that he wins the game despite Client following Strategy 4.1. Let us state and prove three straight-forward claims which are helpful for this proof.

Claim 4.2. *There is at most one critical part at any time $s \geq 1$.*

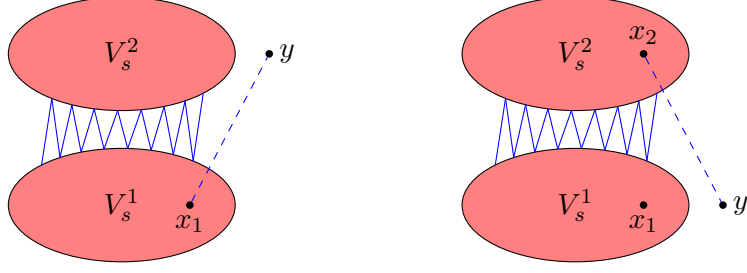


Figure 2: The situation in Claim 4.3. Waiter's edges are in red and Client's in blue.

Proof. Since Client's graph is always a tree, she connects a new vertex $v \in R_{s-1}$ to her graph in every round $s \geq 1$. Assume without loss of generality that the edge connects v to a vertex in V_{s-1}^1 . By the connected rules, no edge incident to v and any other vertex in R_{s-1} has been offered, or therefore claimed, at the end of round s , so that no edge between v and R_s will have been claimed at the end of round s . It follows that V_s^2 is not critical at the end of round s , implying the statement. ■

Claim 4.3. *If Waiter offers an edge incident to some $y \in R_s$ in round $s+1 \geq 1$ that is not critical to either V_s^1 or V_s^2 , then Waiter in fact offers every unclaimed edge between y and V_s in round $s+1$.*

Proof. Suppose that Waiter offers the edge x_1y for some, without loss of generality, $x_1 \in V_s^1$. We first show that Waiter offers all unclaimed edges between y and V_s^2 .

Suppose for contradiction that there is an unclaimed edge x_2y for some $x_2 \in V_s^2$ which Waiter did not offer. Then, Client will choose x_1y (or an equivalent edge) by part (ii) of her strategy. Consequently, x_2y will be an unclaimed edge inside V_{s+1}^2 which Client, following part (i) of her strategy, will eventually pick and therefore close an odd cycle. This contradicts the assumption that Waiter wins the game and he therefore offers all unclaimed edges between y and V_s^2 .

Since y is not critical with respect to V_s^2 , there is at least one unclaimed edge x_2y for some $x_2 \in V_s^2$ which Waiter offers by the first part. Repeating the argument with x_2 and y , we conclude that Waiter also offers all unclaimed edges between y and V_s^1 . ■

Claim 4.4. *If $v \in R_s$ is critical to either V_s^1 or V_s^2 , then there is exactly one unclaimed edge between v and V_s .*

Proof. Assume that the statement does not hold and let $s_0 \geq 1$ be the first time such that there is a vertex $v \in R_{s_0}$ critical to, without loss of generality, $V_{s_0}^1$ and there are at least two unclaimed edges between v and $V_{s_0}^2$.

If v was not critical with respect to $V_{s_0-1}^1$, then in round s_0 Waiter offered at least one edge incident to v and therefore all edges between v and V_{s_0-1} by Claim 4.3. This contradicts the assumption that v is not critical to $V_{s_0}^2$.

Hence v was critical with respect to $V_{s_0-1}^1$ and by our choice of s_0 there was exactly one unclaimed edge between v and $V_{s_0-1}^2$, see Figure 3. Client therefore must have claimed

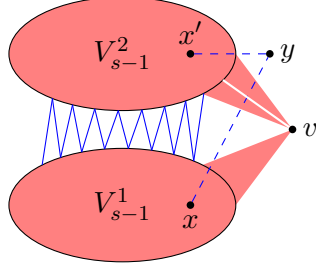


Figure 3: The situation in Claim 4.4. Waiter’s edges are in red and Client’s edges are in blue. The white edge denotes an unclaimed edge and the dashed edges are two of the edges which are offered to Client.

an edge xy with $x \in V_{s_0-1}^1$ and $y \in R_{s_0-1}$ in round s_0 to enlarge $V_{s_0-1}^2$. But y was not critical with respect to $V_{s_0-1}^2$ by Claim 4.2 and hence Waiter offered at least one edge incident to y and $V_{s_0-1}^2$ by Claim 4.3. But following part (iii) of Strategy 4.1, Client would have chosen this edge instead, a contradiction. ■

Equipped with these claims, it is now easy to finish the proof. By Claims 4.3 and 4.4, whenever Waiter offers one edge incident to some $v \in R_s$, he in fact offers all edges between v and V_s . It follows that there will never be an unclaimed edge inside V_s and therefore Client does not give up the game by following part (v) of her strategy. Hence the game ends after some

$$t \geq \frac{\binom{n}{2}}{b+1} = \frac{n(n-1)}{2\lceil n/2 \rceil - 2} \geq \frac{n(n-1)}{n-1} = n$$

rounds with all edges having been claimed. Since $G_C(t)$ is a tree, this implies

$$|V_t| = |E_t| + 1 = t + 1 \geq n + 1,$$

a contradiction. □

5 Concluding remarks and open questions

Other rules. Two further standard positional game variants are Avoider-Enforcer and Waiter-Client games (not to be confused with the Client-Waiter games studied in this paper). About these we are not able to offer anything new, yet the natural questions surrounding them are very interesting.

In the biased Avoider-Enforcer odd cycle game, Enforcer wants to force Avoider to claim all edges of an odd cycle, whereas the appropriately named Avoider tries to avoid just that. Since there are similar issues regarding monotonicity of the bias as in the Client-Waiter variant, there is a *monotone* version of this game, where Avoider claims *at least* one and Enforcer claims *at least* b edges in each round, as well as a *strict* version, where Avoider and Enforcer respectively claim *exactly* one and b edges. In the strict version, there is an

upper threshold bias $b_{ae}^+(\mathcal{OC}_n)$ and a lower threshold bias $b_{ae}^-(\mathcal{OC}_n)$ with the property that Avoider wins for every $b \geq b_{ae}^+(\mathcal{OC}_n)$ and Enforcer wins for every $b < b_{ae}^-(\mathcal{OC}_n)$. For more details on Avoider-Enforcer games see [3, 18, 16, 17]. Hefetz, Krivelevich, Stojaković and Szabó [15] considered various Avoider-Enforcer games, among them the strict version of the biased odd cycle game. In [15] it is shown that $cn \leq b_{ae}^-(\mathcal{OC}_n) \leq b_{ae}^+(\mathcal{OC}_n) \leq n^{3/2}$ for some constant $c > 0$. The bounds also hold for the monotone bias. Clemens, Ehrenmüller, Person and Tran [11] showed $b_{ae}^-(\mathcal{OC}_n) \leq O(n \log n)$, which determines the lower threshold bias up to a logarithmic factor.

Problem 1. What are the threshold biases for the strict and monotone Avoider-Enforcer odd cycle games?

Waiter-Client games are similar to Client-Waiter games, except now Client’s goal is to *avoid* claiming all edges of a winning set. Bednarska-Bzdęga, Hefetz, Krivelevich, and Łuczak considered Waiter-Client games in [7]. A special case of their result, regarding the Waiter-Client odd cycle game, states that $n - 4\lceil n^{3/4} \rceil + 1 \leq b_{wc}(\mathcal{OC}_n) \leq 1.00502n$ and they further conjectured that the lower bound is asymptotically correct.

Connected thresholds. One motivation for Theorem 1.2 was to show that, if the answer to Question 1 is “Yes.”, then the regular threshold is separated from the connected one and in her close-to-optimal strategies Maker should *not* play connected. Hence we believe that it is of interest to investigate the connected thresholds of further games and in particular compare them to the regular thresholds.

For a number of classic Maker-Breaker games, e.g. the connectivity game and the Hamiltonicity game, the threshold biases are known [14, 20] to be $(1 + o(1))n/\ln n$. However it is easy to see that, with a bias of $b = 2$, Breaker can isolate a vertex when playing against connected Maker. Indeed, after Maker takes an edge e , Breaker identifies a vertex v that is not an endpoint of e , and in all the coming rounds just takes all edges from v to the edges of Maker. This way Breaker can isolate v and hence win any game where Maker’s goal is claiming a spanning subgraph of K_n . Consequently the connected and regular thresholds differ drastically in these cases.

In another classic example, the Maker-Breaker H -game, Maker’s goal is to fully claim a copy of a fixed graph H . Bednarska and Łuczak [4] showed that the threshold bias for the Maker-Breaker H -game is $\Theta(n^{1/m_2(H)})$ where $m_2(H) = \max_{H' \subseteq H} (e(H') - 1)/(v(H') - 2)$. Their strategy for Maker is to occupy edges uniformly at random, hence is very far from being connected. Clemens and Tran [12] managed to give an alternative H -building strategy, in the setup of Walker-Breaker games, which also succeed against a bias of $\Theta(n^{1/m_2(H)})$ (in fact, they stated it only for fixed cycles, but the same proof holds for any other fixed graph H , as mentioned in [10]). This in particular means that, just like for the odd-cycle game, the connected and the regular threshold biases for the Maker-Breaker H -game are of the same order. Whether playing connected is actually optimal also in the constant factor of the bias is an outstanding question, just like for the odd cycle game. Considering that here the constant factor of the threshold bias is not even known for the regular game, this question might be pretty hard in general.

For the specific instance of the K_3 -game a simple ad hoc Maker strategy, that works against a bias $(\sqrt{2} - \varepsilon)\sqrt{n}$, is to occupy edges incident to a fixed vertex, and eventually connect two of its neighbors with an edge. Balogh and Samotij [1] proved a Breaker strategy with bias $(2 - (1/24))\sqrt{n}$ which prevents Maker from building a triangle. It would be nice to decide whether the trivial lower bound is tight or at least improve the Balogh-Samotij bound for the connected game.

Problem 2. Give an improved upper bound (i.e., Breaker strategy) on the threshold bias of the Connected Maker-Breaker Triangle game.

Lastly, it would be interesting to study the connected variant of the non- k -colourability game for integers $k \geq 3$, as was studied in [15], and determine whether the connected and regular threshold biases have the same order of magnitude.

Problem 3. Do we have $b_{mb}(\mathcal{NC}_n^k) \sim b_{mb}^c(\mathcal{NC}_n^k)$?

Acknowledgements. The research on this project was initiated and developed during joint research workshops of Tel Aviv University and the Freie Universität Berlin on Positional Games in 2016 and on Graph and on Hypergraph Colouring Problems in 2018. We would like to thank the German-Israeli Foundation (GIF grant number G-1347-304.6/2016) and both institutions for their support. Furthermore, we would like to thank Michael Krivelevich and Gal Kronenberg for fruitful discussions, and to the anonymous referees for helpful remarks.

References

- [1] J. Balogh and W. Samotij. On the Chvátal-Erdős triangle game. *Electron. J. Combin.*, 18, 2011.
- [2] J. Beck. Positional Games and the Second Moment Method. *Combinatorica*, 2:169–216, 2002.
- [3] J. Beck. *Combinatorial Games: Tic-Tac-Toe Theory (Encyclopedia of Mathematics and its Applications)*. Cambridge University Press, 2011.
- [4] M. Bednarska and T. Łuczak. Biased positional games for which random strategies are nearly optimal. *Combinatorica*, 20:477–488, 2000.
- [5] M. Bednarska and O. Pikhurko. Biased positional games on matroids. *European J. Combin.*, 26(2):271–285, 2005.
- [6] M. Bednarska and O. Pikhurko. Odd and even cycles in Maker–Breaker games. *European J. Combin.*, 29(3):742–745, 2008.
- [7] M. Bednarska-Bzdęga, D. Hefetz, M. Krivelevich, and T. Łuczak. Manipulative waiters with probabilistic intuition. *Combin. Probab. Comput.*, 25:823–849, 2016.

- [8] M. Bednarska-Bzdęga, D. Hefetz, and T. Łuczak. Picker-Chooser fixed graph games. *J. Combin. Theory Ser. B*, 119:122–154, 2016.
- [9] V. Chvátal and P. Erdős. Biased positional games. *Ann. Discrete Math.*, 2:221–228, 1978.
- [10] D. Clemens. Two-player games on graphs (doctoral dissertation). 2015.
- [11] D. Clemens, J. Ehrenmüller, Y. Person, and T. Tran. Keeping Avoider’s graph almost acyclic. *Electron. J. Combin.*, 22:P1.160, 2015.
- [12] D. Clemens and T. Tran. Creating cycles in walker–breaker games. *Discrete Math.*, 339:2113–2126, 2016.
- [13] L. Espig, A. Frieze, M. Krivelevich, and W. Pegden. Walker-Breaker games. *SIAM J. Discrete Math.*, 29:1476–1485, 2015.
- [14] H. Gebauer and T. Szabó. Asymptotic random graph intuition for the biased connectivity game. *Random Structures and Algorithms*, 35:431–443, 2009.
- [15] D. Hefetz, M. Krivelevich, M. Stojaković, and T. Szabó. Planarity, colorability, and minor games. *SIAM J. Discrete Math.*, 22:194–212, 2008.
- [16] D. Hefetz, M. Krivelevich, M. Stojaković, and T. Szabó. Avoider–Enforcer: The rules of the game. *J. Combin. Theory Ser. A*, 117:152–163, 2010.
- [17] D. Hefetz, M. Krivelevich, M. Stojakovic, and T. Szabó. *Positional Games (Oberwolfach Seminars)*. Birkhäuser, 2014.
- [18] D. Hefetz, M. Krivelevich, and T. Szabó. Avoider–Enforcer games. *J. Combin. Theory Ser. A*, 114:840–853, 2007.
- [19] D. Hefetz, M. Krivelevich, and W. E. Tan. Waiter–Client and Client–Waiter planarity, colorability and minor games. *Discrete Math.*, 339(5):1525–1536, 2016.
- [20] M. Krivelevich. The critical bias for the Hamiltonicity game is $(1 + o(1))n / \ln n$. *J. Amer. Math. Soc.*, 24:125–131, 2011.
- [21] M. Krivelevich. Long cycles in locally expanding graphs, with applications. *Combinatorica*, pages 1–17, 2017.

Jan Corsten

The London School of Economics and Political Science, Department of Mathematics,
London WC2A 2AE, UK. E-mail: j.corsten@lse.ac.uk. Supported by an LSE studentship.

Adva Mond

Tel Aviv University, School of Mathematical Sciences, Israel. E-mail: adva-mond@mail.tau.ac.il

Alexey Pokrovskiy

Birkbeck College, University of London, United Kingdom, Email:
dr.alexey.pokrovskiy@gmail.com.

Christoph Spiegel

Universitat Politècnica de Catalunya and Barcelona Graduate School of Mathematics,
Department of Mathematics, Edificio Omega, 08034 Barcelona, Spain. E-mail: christoph.spiegel@upc.edu. Supported by a Berlin Mathematical School Scholarship and
by the Spanish Ministerio de Economía y Competitividad FPI grant under the project
MTM2014-54745-P and the María de Maetzu research grant MDM-2014-0445.

Tibor Szabó

Institute of Mathematics, FU Berlin, 14195 Berlin, Germany. E-mail: szabo@math.fu-berlin.de. Research supported in part by GIF grant No. G-1347-304.6/2016.