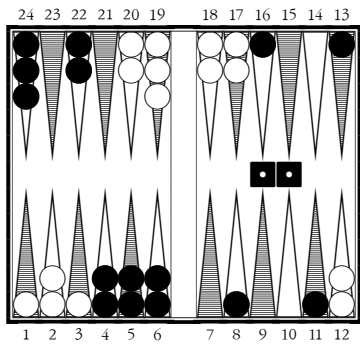
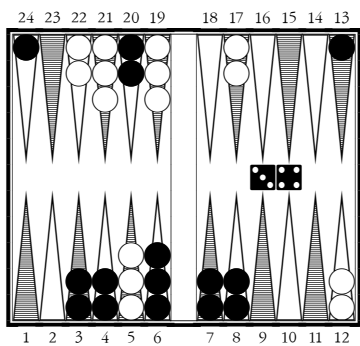


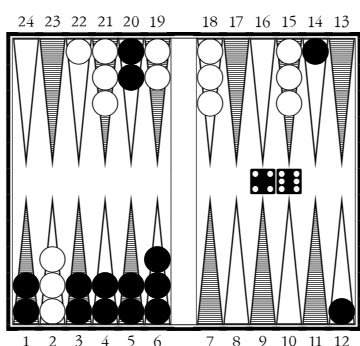
- (a) 11/5 10/5
- (b) 11/6 10/4
- (c) 22/16 10/5
- (d) 22/16 11/6
- (e) 22/17 10/4
- (f) 22/17 11/5
- (g) 22/17 22/16



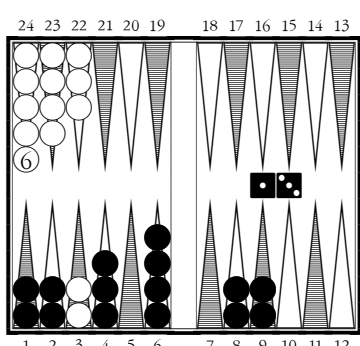
- (a) 24/23 16/13
- (b) 24/23 11/8
- (c) 22/21(2) 8/6
- (d) 24/23(2) 8/6
- (e) 22/21(2) 4/3\*(2)
- (f) 24/23(3) 23/22
- (g) 24/21 22/21



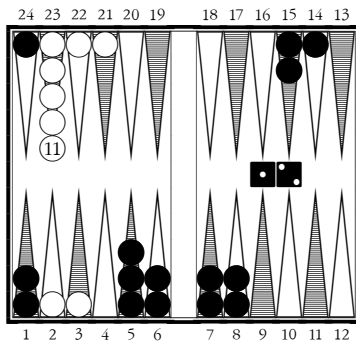
- (a) 13/6
- (b) 24/20 13/10
- (c) 24/20 6/3
- (d) 20/13
- (e) 7/4 7/3



- (a) 14/4
- (b) 14/10 12/6
- (c) 14/8 12/8
- (d) 20/14 20/16
- (e) 20/14 12/8

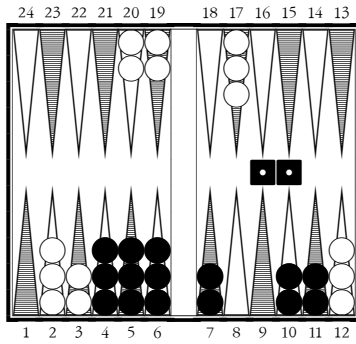


- (a) 8/5 6/5
- (b) 9/8 9/6
- (c) 6/2



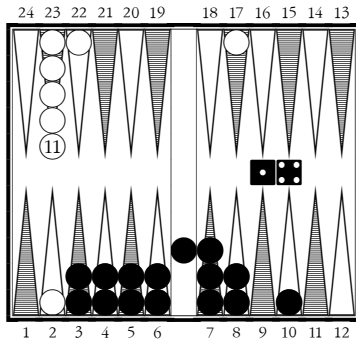
2 Position 6

- (a) 24/22\*/21\*
- (b) 24/22\* 7/6
- (c) 5/3\*/2\*



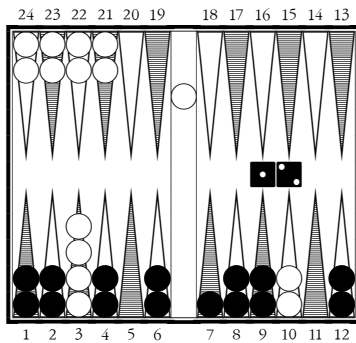
1 Position 7

- (a) 10/8(2)
- (b) 11/9(2)
- (c) 11/9 10/9(2)
- (d) 10/9(2) 6/4
- (e) 11/7
- (f) 11/10(2) 6/4
- (g) 11/10(2) 7/6(2)



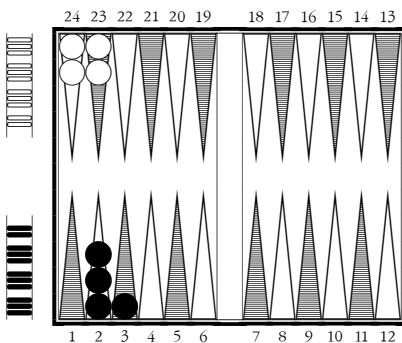
2 Position 8

- (a) bar/24 7/3
- (b) bar/24 10/6
- (c) bar/24 6/2\*
- (d) bar/21 3/2\*
- (e) bar/21 7/6
- (f) bar/21 10/9
- (g) bar/22



2 Position 9

- (a) 7/4
- (b) 7/5 6/5
- (c) 8/7 8/6
- (d) 9/8 9/7
- (e) 12/9



Position 10

Cube Action?

2

- (a) Zu gut / Aufgabe
- (b) Redoppel / Aufgabe
- (c) Redoppel / Annahme
- (d) Kein Redoppel / Annahme
- (e) Kein Redoppel / Beaver